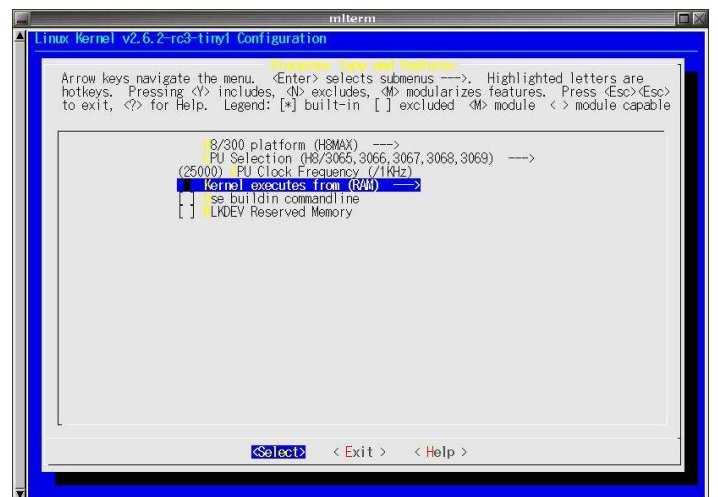
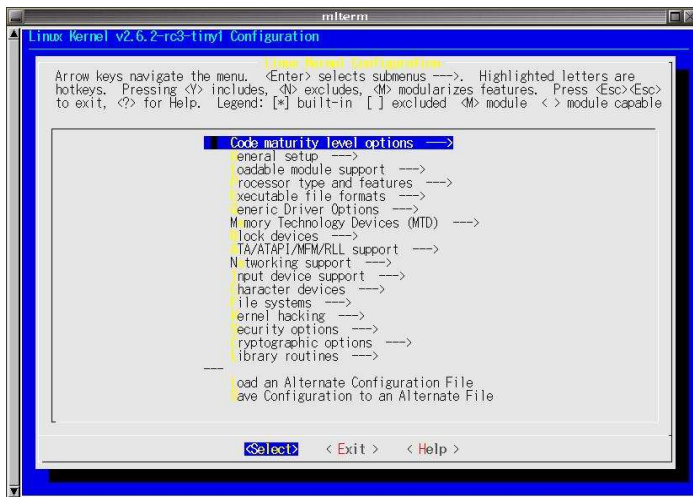


uClinux H8/300

Linux-2.6 を H8/300 シリーズ CPU
(ルネサステクノロジ) へ移植。

移植の成果は標準カーネルに取り込まれており、
対応アーキテクチャの一つになっています。

CPU 内蔵 I/O 以外にも Ethernet や IDE に対応。
ネットワークへの接続や、大容量のストレージを
接続することもできます。



CPU



Now booting linux kernel:
Entry Address 0x00400000
Cmdline : console=ttySC1,38400 root=03:01
Linux version 2.6.2-rc3-tiny1 (ysato@mitou) (gcc バージョン 3.3.2) #114 Tue Feb 17 22:04:03 JST 2004

uClinux H8/300H
Target Hardware: H8MAX
Flat model support (C) 1998,1999 Kenneth Albanowski, D. Jeff Dionne
H8/300 series support by Yoshinori Sato <ysato@users.sourceforge.jp>
On node 0 totalpages: 1536
DMA zone: 0 pages, LIFO batch:1
Normal zone: 1536 pages, LIFO batch:1
HighMem zone: 0 pages, LIFO batch:1
Building zonelist for node : 0
Kernel command line: console=ttySC1,38400 root=03:01
virtual vector at 0x00fffd20
PID hash table entries: 16 (order 4: 128 bytes)
Memory available: 948k/1049k RAM, 0k/0k ROM (879k kernel code, 118k data)
Calibrating delay loop... 8.21 BogoMIPS
Dentry cache hash table entries: 1024 (order: 0, 4096 bytes)
Inode-cache hash table entries: 1024 (order: 0, 4096 bytes)
Mount-cache hash table entries: 512 (order: 0, 4096 bytes)
POSIX conformance testing by UNIFIX
SuperH SCL(F) driver initialized
ttySC0 at 0x00ffffb0 is a SCL
ttySC1 at 0x00ffffb8 is a SCL
ttySC2 at 0x00ffffc0 is a SCL
ne.c:v1.10 9/23/94 Donald Becker (becker@scyld.com)
Last modified Nov 1, 2000 by Paul Gortmaker
NE*000 ethercard probe at 0x800600: 00 02 cb 01 6c 5a
eth0: NE2000 found at 0x800600, using IRQ 16.
Uniform Multi-Platform E-IDE driver Revision: 7.00alpha2
ide: Assuming 50MHz system bus speed for PIO modes; override with idebus=xx
hda: Hitachi ATA 6.0, CFA DISK drive
Using noop io scheduler
ide0 at 0x200000-0x20000f,0x60000c on irq 17
hda: max request size: 128KiB
hda: 250368 sectors (128 MB) w/1KiB Cache, CHS=978/8/32
hda: hda1
NET: Registered protocol family 2
inet_init: Cannot add UDP protocol
IP: routing cache hash table of 512 buckets, 4Kbytes
TCP: Hash tables configured (established 512 bind 1024)
hda: hda1
VFS: Mounted root (ext2 filesystem) readonly.
Freeing unused kernel memory: 44k freed (0x4e6000 - 0x4f0000)
Shell invoked to run file: /etc/rc
Command: hostname H8MAX
Command: mount -t proc proc /proc
Command: mount -o remount,rw /dev/hda1 /
Command: ifconfig eth0 192.168.16.133
Command: cat /etc/motd
Welcome to



strawberry-linux.com/H8MAX port.
For further information check:
<http://www.uclinux.org/>

Execution Finished, Exiting

```
Sash command shell (version 1.1.1)
/> ls
vmlinux.bin  htdocs      linux.bin   var         usr
tmp          sbin        proc        mnt         lib
home        etc         dev         bin         lost+found
/> free
MemTotal:    1016 kB
MemFree:     404 kB
Buffers:     40 kB
/> ps
  PID  PORT  STAT  SIZE  SHARED  %CPU  COMMAND
    1     S    71K   0K   0.0  /sbin/init
    2     S    0K    0K   0.0  ksoftirqd/0
    3     S    0K    0K   0.0  events/0
    4     S    0K    0K   0.0  kblockd/0
    5     S    0K    0K   0.0  pdflush
    6     S    0K    0K   0.0  pdflush
    7     S    0K    0K   0.0  kswapd0
   14     R   135K   0K   0.0  /bin/sh
/> mount
rootfs on / type rootfs (rw)
/dev/hda1 on / type ext2 (rw)
/proc on /proc type proc (rw)
/> mount -o remount,ro /dev/hda1 /
/> shutdown -h now
System halted.
```